

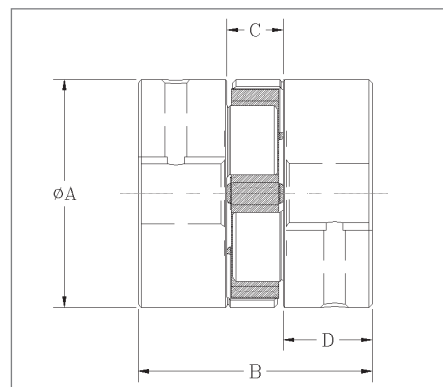
DIMENSIONS

Hub No.	Type	Outside Diameter A	Hub Diameter HD	Overall Length B	Distance between flanges C	Length thru bore D	Bore		Assy Wt. Lbs. (Avg)	Approx. WR2 lbs-in2
							Min.	Max.		
L035 *	1	5/8	-	13/16	9/32	17/64	1/8 (4mm)	3/8 (8mm)	0.10	0.003
L050 *	1	1 1/16	-	1 23/32	15/32	5/8	3/16 (5mm)	5/8 (16mm)	0.25	0.054
L070	1	1 3/8	-	2	1/2	3/4	3/16 (7mm)	3/4 (19mm)	0.50	0.115
L075	1	1 3/4	-	2 1/8	1/2	13/16	3/16 (9mm)	7/8 (22mm)	0.90	0.388
L090	1	2 1/8	-	2 9/64	33/64	13/16	3/16 (8mm)	1 (25mm)	1.35	0.772
L095	1	2 1/8	-	2 33/64	33/64	1	7/16 (11mm)	1 1/8 (28mm)	1.55	0.890
L099	1	2 17/32	-	2 27/32	23/32	1 1/16	7/16 (14mm)	1 3/16 (30mm)	2.25	2.048
L100	1	2 17/32	-	3 15/32	23/32	1 3/8	7/16 (12mm)	1 3/8 (35mm)	2.80	2.783
L110	1	3 5/16	-	4 1/4	7/8	1 11/16	5/8 (16mm)	1 5/8 (42mm)	5.95	8.993
L150	1	3 3/4	-	4 1/2	1	1 3/4	5/8 (16mm)	1 7/8 (48mm)	7.90	11.477
L190	2	4 1/2	4	5	1	2	3/4 (19mm)	2 1/8 (55mm)	13.80	39.256
L225	2	5	4 1/4	5 3/8	1	2 3/16	3/4 (30mm)	2 5/8 (65mm)	17.30	65.000

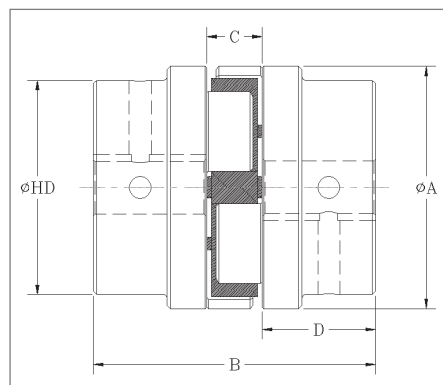
*Important: NOT SOLD INDIVIDUALLY. These parts are packaged 4 to a box.

WRENCH TORQUE TO TIGHTEN SCREWS

Hub No.	Set Screws			Tightening torque in-lbs.
	Qty.	Size		
		Inch Series	Metric Series	
L035	1	#6-32	-	7
L050	2	1/4-20	M4-0.7	45
L070	2	1/4-20	M6-1	78
L075	2	1/4-20	M6-1	78
L090	2	1/4-20	M6-1	78
L095	2	5/16-18	M8-1.25	80
L099	2	5/16-18	M8-1.25	150
L100	2	5/16-18	M8-1.25	150
L110	2	3/8-16	M10-1.5	225
L150	2	3/8-16	M10-1.5	260
L190	2	1/2-13	M12-1.75	540
L225	2	1/2-13	M12-1.75	540



TYPE 1



TYPE 2

COUPLINGS